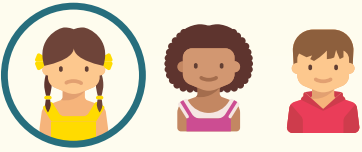


# Will your **PRETERM INFANT** need *EARLY INTERVENTION services?*

Preterm infants are:

**2x** more likely to have developmental delays

**5x** more likely to have learning challenges



**1 in 3** preterm infants will require support services at school



*Early intervention can help preterm infants:*



Enhance language and communication skills



Build more effective learning techniques



Process social and emotional situations



Address physical challenges



Prevent mild difficulties from developing into major problems

*Early diagnosis*

could qualify babies for their state's **early intervention services...**



...but many parents are **unaware.**



*NICU staff, nurses, pediatricians and social workers should talk* with NICU families about the challenges their baby may face.

*Awareness, referral & timely enrollment* in early intervention programs can help **infants thrive** and grow.

